

Class 8 Park Model

Class Features

The class 8 manufactured home Park Model is a “high-quality” unit, which emphasizes superior quality materials and design. As in the class 6 and 7, these homes incorporate many elements of a “site-built” home. Class 8 Park Models are typically used as a temporary residence for recreational, camping, or seasonal use.

One requirement for a Park Model is the size. The entire 1st floor of the structure may not exceed 400 square feet when set up. Loft area square footage with maximum ceiling height of five feet is not included in this number.

The quality of the class 8 Park Model is obvious from the exterior. Evident features may include large quality windows with trim, quality materials for siding and roof cover, lofts, bay windows, more complex floor plans, and/or higher pitched roofs than lower quality single wide homes.

The interior design and materials are excellent. There are many built-in components to these class 8 Park Models. These can include entertainment centers, dressers, cabinets, breakfast bars, and shelving. Other standard items in the class 8 include vaulted ceilings, wood trim, wainscoting, quality cabinets and flooring, and recessed lighting. The interior finish is typically tape and texture or high quality wood. The concept of this class is quality residential living.

This class of home appeals to those looking for a superior quality manufactured structure, which will be used as a “vacation-home”, with price only being limited by their budget.

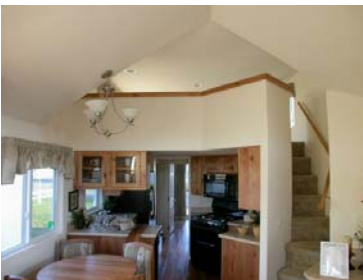
Class 8 Park Model

Class Illustrations Exterior



Class 8 Park Model

Class Illustrations Interior



Class 8 Park Model

Base Specifications

Foundation/Frame	Class 8 Park Models are built on a single chassis mounted on wheels with a gross trailer area not to exceed 400 square feet when set up. If home is wider than 8'6" special permits are required to transport.
Exterior Walls	Residential-type exterior siding is used. Quality windows with wood trim, recessed entries, bay windows and other decorative features are used in exterior design.
Roof	Gable roof, wood frame, higher pitch than class 7. Composition shingle or metal roof covers are typical.
Partitions	Hardwood or tape and texture walls. Quality wood trim and molding. One bedroom is standard. Vaulted or cathedral ceilings, with optional lofts on most styles. Ceiling cover is hardwood or tape and texture, may have decorative beams.
Interior Components	Good quality veneer or hardwood cabinets, quality laminate, tile, granite or marble countertop and backsplash in kitchen and bath, quality appliances built in, many built-in cabinets, shelves, drawers, entertainment centers throughout. Possibilities are endless with most. These class 8 Park models are built to individual needs.
Electrical	Ground fault protected receptacles are specified where they are appropriate. Only approved electrical fixtures, appliances, equipment and materials as have been labeled by nationally recognized testing agencies are allowed. Voltage tests must be performed on the completed Park Models to determine that the electrical system is adequately insulated and without short circuits.
Plumbing	One bathroom is standard due to size. Good quality fixtures. Items included: One shower/tub, one lavatory, one toilet, kitchen sink and water heater.
Heating	Electric, gas, or oil forced-air furnace. Possible air conditioning or heat pump.