



**Figure 1: General Location Map**  
 Pacific City Oregon  
 Jupiter Submarine Cable System

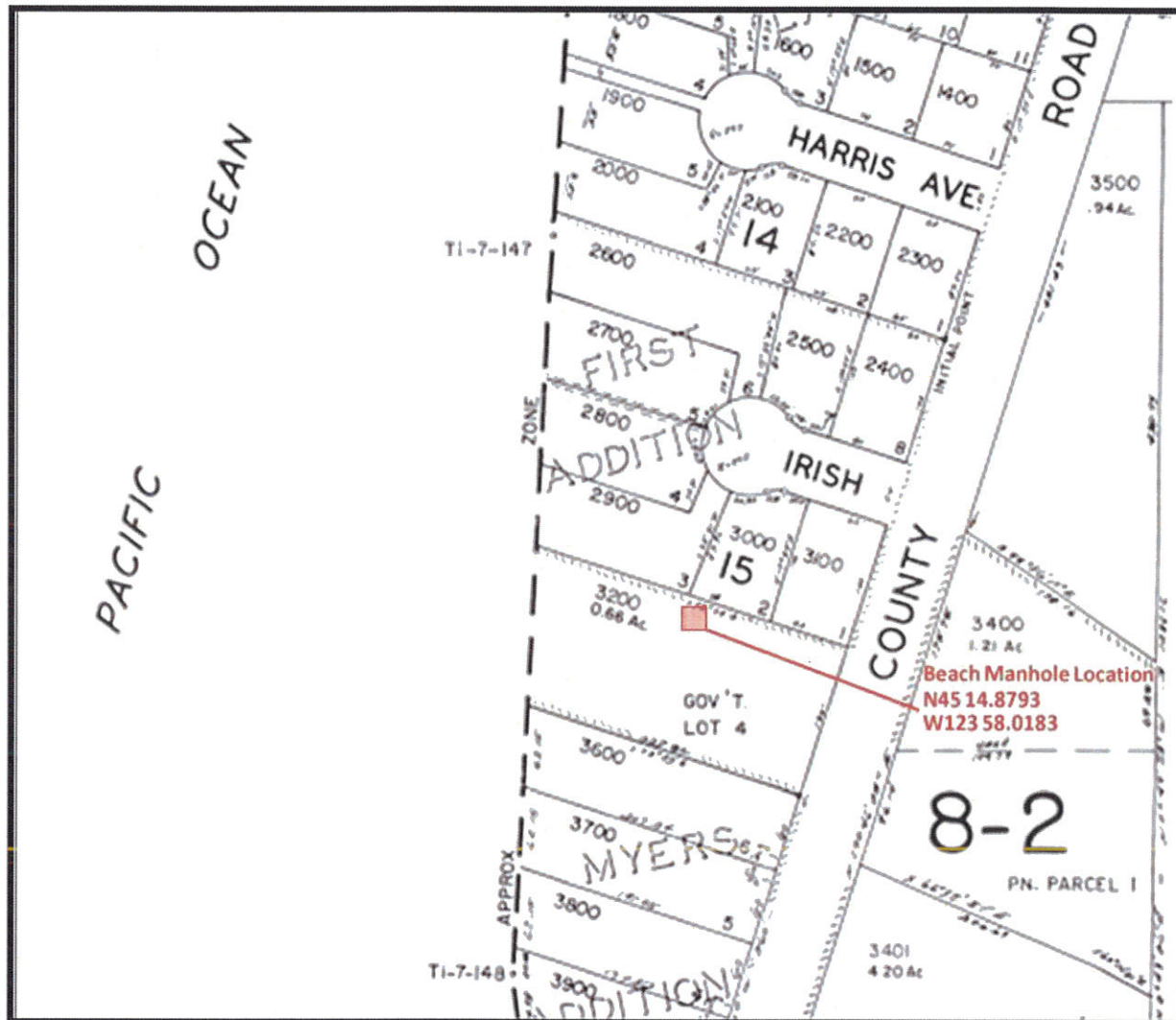
- Legend**
- Lot 3200
  - Proposed Cable Route



**Notes:**  
 Source: TE SubCom, NDA, Esri  
 Projection: UTM WGS84  
 The accuracy of source information cannot be verified; therefore, all linework, labeling, and markings appearing on this map may be subject to errors or omissions in position, classification, and interpretations. This map should only be used as a visual guide for general overview purposes.



RECEIVED  
 MAR 04 2009  
 BY: MJ



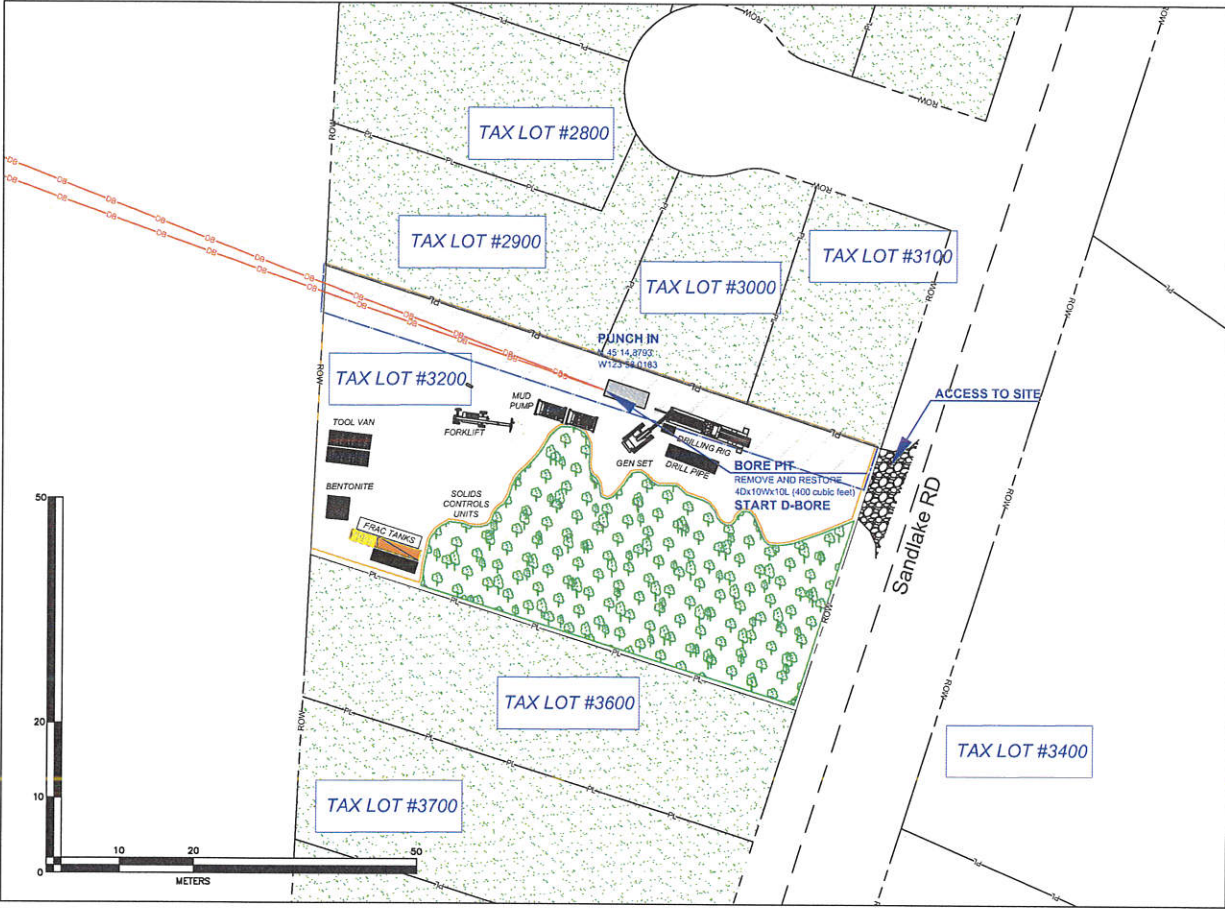
**Figure 2:**  
Tax Parcel Map for Beach Manhole  
Jupiter Cable Network



Notes:  
Projection: UTM WGS84



RECEIVED  
MAR 04 2010  
BY: MJ



DIRECTION OF ENGINEERING

- 1.- Minimum of 12" separation between property line and easement.
- 2.- All measurements and distances to be verified in the field.
- 3.- Remove and Restore to equal or better condition.
- 4.- Temporary Work area approximately 19,000 square feet

FOOTAGE	
DESCRIPTION	FOOTAGE
TRENCH	
MISSILE BORE	
DIRECTIONAL BORE	
BISSOLE ATTACHMENT	
STRAND ONLY	
NEW AERIAL	
TRENCH BY HAND DIGGING	
TOTAL NEW MANHOLES	

LEGEND

- RL
- ROW
- HDD Conduits
- Temp. Work Area
- Easement
- Tress
- Beach Manhole
- Route
- Trench



Figure 3, Jupiter Cable Beach Manhole Site Layout

REVISIONS			
ISSUE	DATE	DESCRIPTION	INITIAL
1	2018-09-28	INITIAL ISSUE	JMS
2	2018-10-28	UPDATED	CGG
3	2018-12-19	UPDATED FOR PERMITTING	CGG

PROJECT NAME:	JUPITER CABLE
PROJECT LOCATION:	PACIFIC CITY, OR/USA
MANAGER:	JMS/PCG
PROJECT CODE:	
DATE:	HDD OVERVIEW
SCALE:	1:500
	Sheet 2 of 2

RECEIVED  
 MAR 04 2019  
 BY: MJ